



Art and Design

Landscapes and Cityscapes

Monet's Garden





Aim

- I can paint a landscape using colour and texture.
- I can describe the work of the artist, Monet.

Success Criteria

- I can use bright colours to paint a garden.
- I can use my fingers to apply thick paint.
- I can explain that Monet painted lots of pictures outdoors.
- I can talk about the bright colours that Monet used in his paintings.

Claude Monet

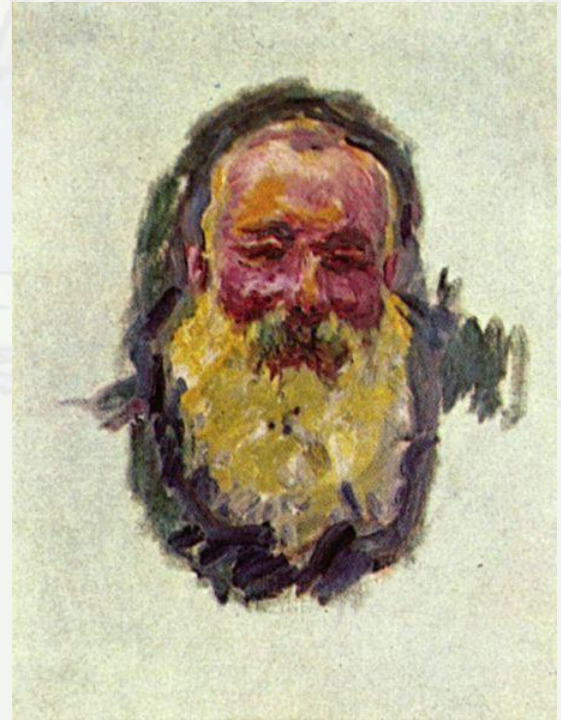
Oscar-Claude Monet was a French painter, born in 1840.

He was a founder of French Impressionist painting.

The term “Impressionism” comes from the title of his painting, *Impression, Sunrise*.

He enjoyed painting in the outdoors, and painted landscapes at different times of day and in all kinds of weather.

He often painted the same scene more than once, to capture the changing light and different seasons.



Close-up



Monet painted with bold brushstrokes.

Up close, Monet paintings can look messy, and it can be hard to tell what it is.



What do you think this could be a painting of?

Attribution - Photo courtesy of CarlosR38 (@flickr.com) - granted under creative commons licence - attribution

Close-up

Apple Trees in Bloom at Giverny 1900-01



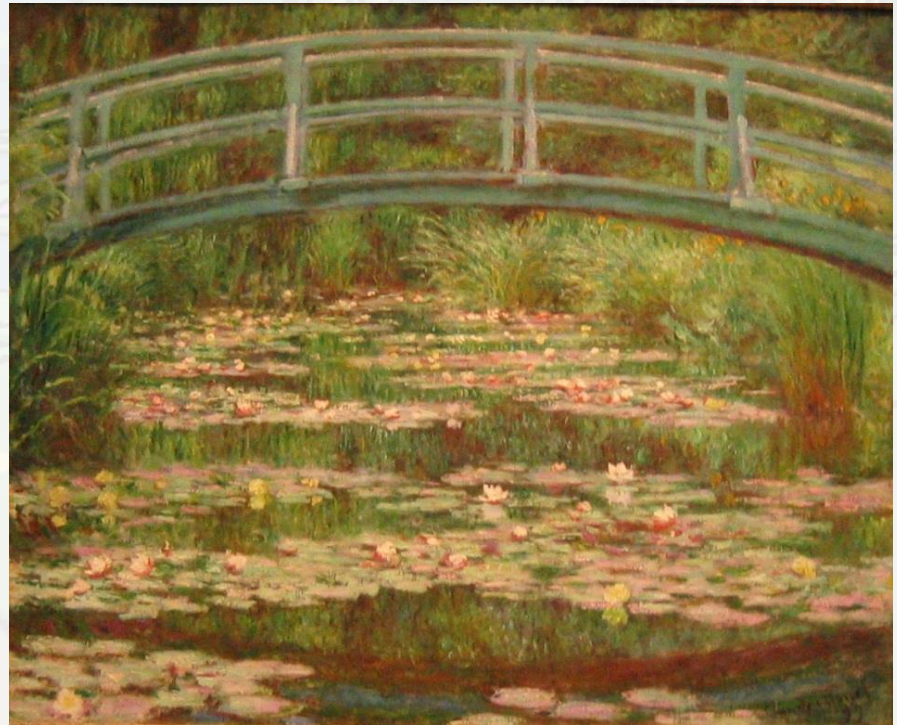
Attribution - Photo courtesy of CarlosR38 (@flickr.com) - granted under creative commons licence - attribution

Giverny

In 1883 Monet moved to Giverny, where he bought a house with lots of land.

He created beautiful gardens, starting with lily ponds.

He enjoyed painting his large garden in different seasons.



Attribution - Photo courtesy of Micah MacAllen (@flickr.com) - granted under creative commons licence - attribution

Giverny

Lily Ponds

In 1899, he began painting water lilies and continued to do so for 20 years.

His paintings of water lilies are his most well-known artworks.



Attribution - Photo courtesy of HarshLight (@flickr.com) - granted under creative commons licence - attribution

Giverny

Visiting Monet's Garden

Monet's garden is now open to the public and visitors come from all over the world to enjoy it.



Attribution - Photo courtesy of MJM Photographie (@flickr.com) - granted under creative commons licence - attribution

Looking at Paintings

Monet painted hundreds of paintings of his garden.
We're going to look at some of these paintings.

Think about the
colours that you can
see.

Look at the
brushstrokes that
Monet used.

How do you think
Monet felt when he
was painting these
pictures?



Looking at Paintings

Woman in the Garden 1867



Attribution - Photo courtesy of Joaquin Martinez (@flickr.com) - granted under creative commons licence - attribution

Looking at Paintings

Flowering Pear Tree 1885



Attribution - Photo courtesy of CarlosR38 (@flickr.com) - granted under creative commons licence - attribution

Looking at Paintings

Flowers at Vetheuil 1881



Attribution - Photo courtesy of CarlosR38 (@flickr.com) - granted under creative commons licence - attribution

Looking at Paintings

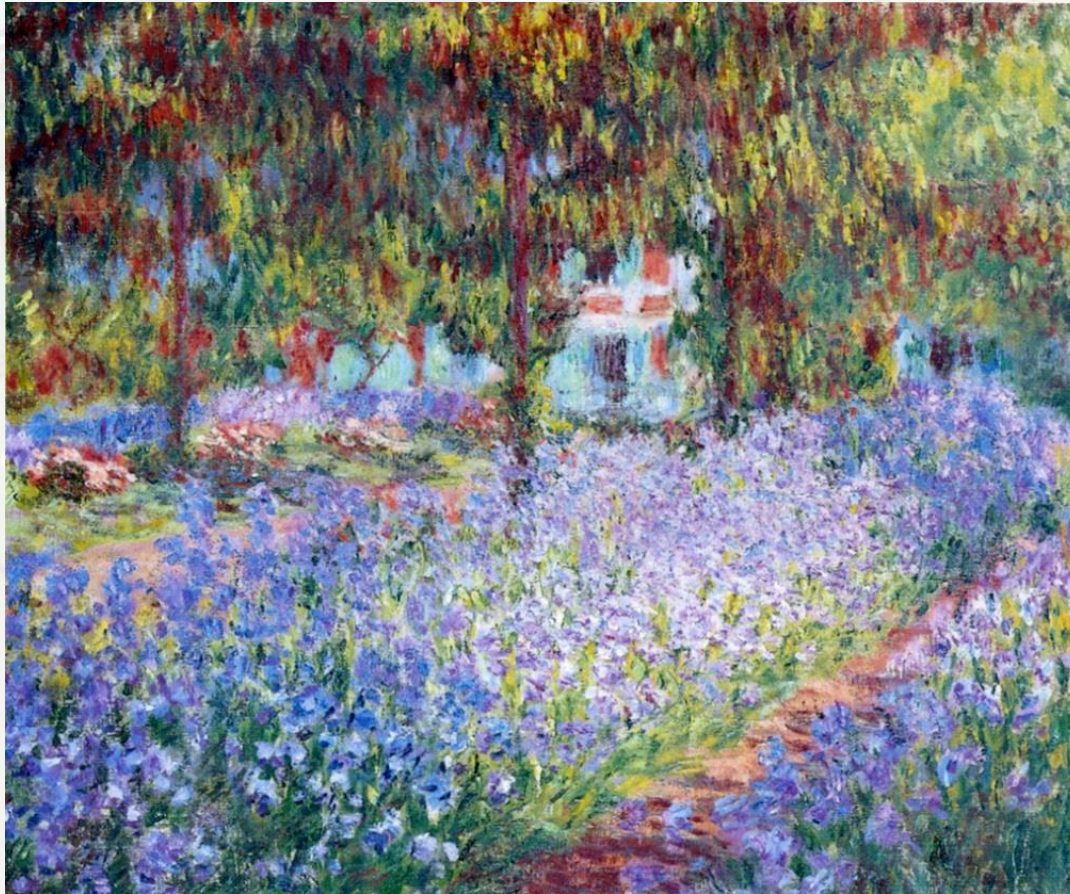
Poppy Fields near Argenteuil 1875



Attribution - Photo courtesy of Tony Hisgett (@flickr.com)- granted under creative commons licence - attribution

Looking at Paintings

The Artist's Garden at Giverny 1900



Attribution - Photo courtesy of Gary R. Caldwell (@flickr.com) - granted under creative commons licence - attribution

Looking at Paintings

The Japanese Bridge 1900



Attribution - Photo courtesy of Michela Simoncini (@flickr.com) - granted under creative commons licence - attribution

Looking at Paintings

La Grande Allée à Giverny 1900



Attribution - Photo courtesy of Jean-Pierre Dalbéra (@flickr.com) - granted under creative commons licence - attribution

Today



Look at the photo of Monet's garden. You will find it on SeeSaw.
Look carefully at the colours.

Can you draw then colour or paint a landscape garden?

- Sketch a faint outline of your painting in pencil.
- If you're using paint, dip the tip of your finger into the paint and dab it onto your picture. Use a cotton bud to add smaller details, such as flowers.
- If you're using pencils, crayons or pens, use colour carefully.
- Take a photo of your artwork and upload it onto SeeSaw.



